

OXFORDCHASE RETAIL

Real Estate Brokerage, Consulting and Management

FOR SALE



COMMERCIAL/INDUSTRIAL *Railroad Avenue & Holt Avenue Pocomoke City, Maryland*

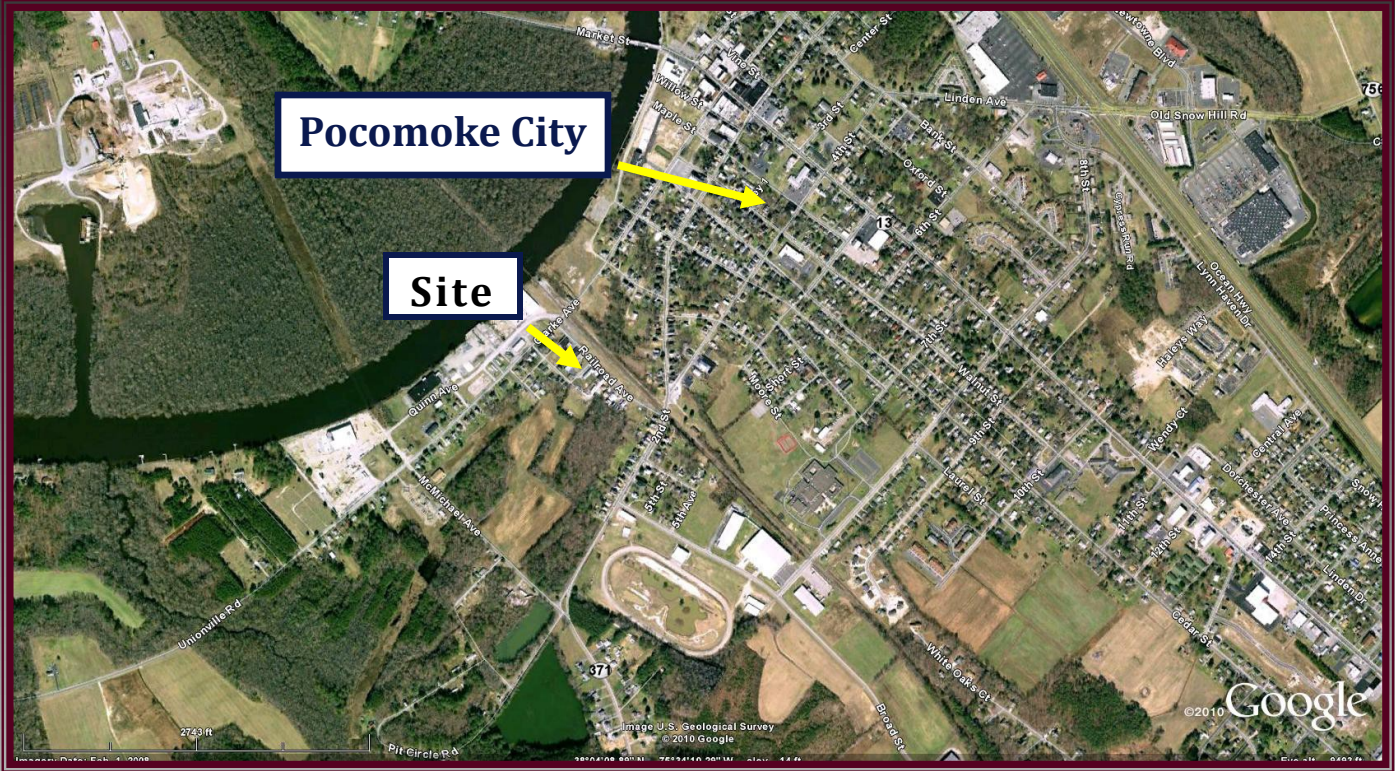
AVAILABLE:	22,770 sf of land; 2,000 sf of warehouse		
LISTED PRICE:	\$100,000		
ZONED:	M-2		
LOCATION:	Located in an industrial section of Pocomoke City, MD.		
DEMOGRAPHICS:	<u>1 mile</u>	<u>3 miles</u>	<u>5 miles</u>
Population:	3,452	5,371	6,808
Avg. HH. Income:	\$47,712	\$50,269	\$51,699
Daytime Population:	3,371	6,231	7,690

COMMENTS:

This property has a warehouse facility with three large bay doors, ideal for construction, auto body repair, furniture manufacturer, electrical or plumbing businesses. As well as a large accessible area for equipment or fleet storage.

CONTACT

Stacy LeMay
114 Front Street
Pocomoke City, MD 21851
410-957-4005
stacy@oxfordchase.net
www.oxfordchase.net



22,770 sf of land. Easy access for storage of equipment or fleet.



Approximately 2,000 sf of warehouse.

OXFORDCHASE RETAIL

StacyLeMay  stacy@oxfordchase.net

114 Front Street

Pocomoke City, Maryland 21851

410-957-4005

www.oxfordchase.net